

» MayCAD



» MayTube

MayCAD

Design Software

- Free to use
- Easy to install
- 80% faster
- Export function for 3D models and parts list

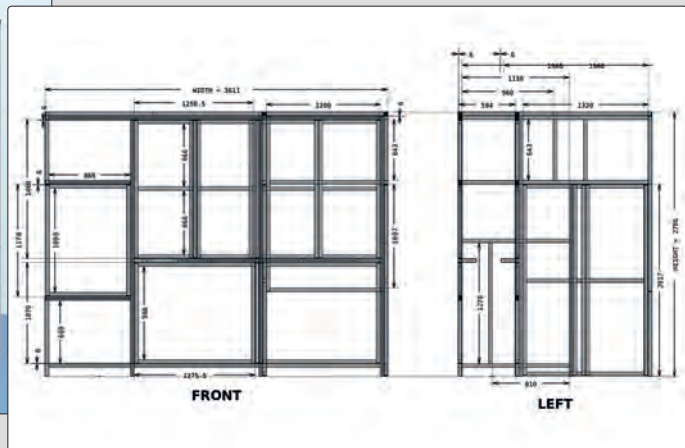
Sample

Machine enclosure

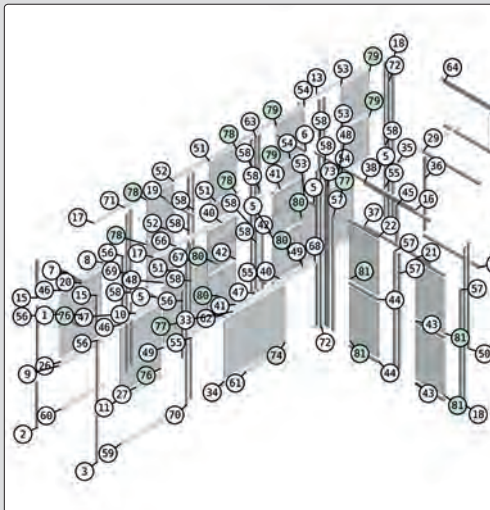
Complete in 20 min. ... Ready



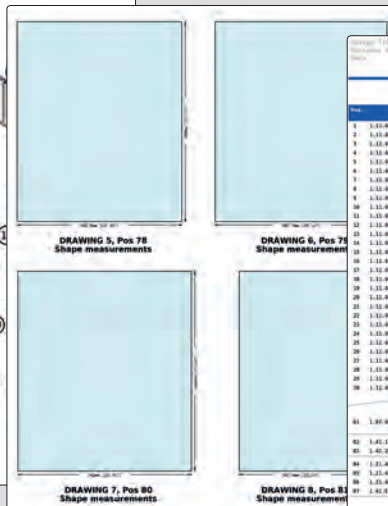
3D view



Dimensional drawing



Exploded view with part numbers



Detailed drawings for all panel elements

Bill of materials			
Pos.	Partname	Quantity	Measurement
1	1.12.00000.12A-P-000001000	1	1200 x 2000
2	1.12.00000.12A-P-000001000	1	1200 x 2000
3	1.12.00000.12A-P-000001000	1	1200 x 2000
4	1.12.00000.12A-P-000001000	1	1200 x 2000
5	1.12.00000.12A-P-000001000	1	1200 x 2000
6	1.12.00000.12A-P-000001000	1	1200 x 2000
7	1.12.00000.12A-P-000001000	1	1200 x 2000
8	1.12.00000.12A-P-000001000	1	1200 x 2000
9	1.12.00000.12A-P-000001000	1	1200 x 2000
10	1.12.00000.12A-P-000001000	1	1200 x 2000
11	1.12.00000.12A-P-000001000	1	1200 x 2000
12	1.12.00000.12A-P-000001000	1	1200 x 2000
13	1.12.00000.12A-P-000001000	1	1200 x 2000
14	1.12.00000.12A-P-000001000	1	1200 x 2000
15	1.12.00000.12A-P-000001000	1	1200 x 2000
16	1.12.00000.12A-P-000001000	1	1200 x 2000
17	1.12.00000.12A-P-000001000	1	1200 x 2000
18	1.12.00000.12A-P-000001000	1	1200 x 2000
19	1.12.00000.12A-P-000001000	1	1200 x 2000
20	1.12.00000.12A-P-000001000	1	1200 x 2000
21	1.12.00000.12A-P-000001000	1	1200 x 2000
22	1.12.00000.12A-P-000001000	1	1200 x 2000
23	1.12.00000.12A-P-000001000	1	1200 x 2000
24	1.12.00000.12A-P-000001000	1	1200 x 2000
25	1.12.00000.12A-P-000001000	1	1200 x 2000
26	1.12.00000.12A-P-000001000	1	1200 x 2000
27	1.12.00000.12A-P-000001000	1	1200 x 2000
28	1.12.00000.12A-P-000001000	1	1200 x 2000
29	1.12.00000.12A-P-000001000	1	1200 x 2000
30	1.12.00000.12A-P-000001000	1	1200 x 2000
31	1.12.00000.12A-P-000001000	1	1200 x 2000
32	1.12.00000.12A-P-000001000	1	1200 x 2000
33	1.12.00000.12A-P-000001000	1	1200 x 2000
34	1.12.00000.12A-P-000001000	1	1200 x 2000
35	1.12.00000.12A-P-000001000	1	1200 x 2000
36	1.12.00000.12A-P-000001000	1	1200 x 2000
37	1.12.00000.12A-P-000001000	1	1200 x 2000
38	1.12.00000.12A-P-000001000	1	1200 x 2000
39	1.12.00000.12A-P-000001000	1	1200 x 2000
40	1.12.00000.12A-P-000001000	1	1200 x 2000
41	1.12.00000.12A-P-000001000	1	1200 x 2000
42	1.12.00000.12A-P-000001000	1	1200 x 2000
43	1.12.00000.12A-P-000001000	1	1200 x 2000
44	1.12.00000.12A-P-000001000	1	1200 x 2000
45	1.12.00000.12A-P-000001000	1	1200 x 2000
46	1.12.00000.12A-P-000001000	1	1200 x 2000
47	1.12.00000.12A-P-000001000	1	1200 x 2000
48	1.12.00000.12A-P-000001000	1	1200 x 2000
49	1.12.00000.12A-P-000001000	1	1200 x 2000
50	1.12.00000.12A-P-000001000	1	1200 x 2000
51	1.12.00000.12A-P-000001000	1	1200 x 2000
52	1.12.00000.12A-P-000001000	1	1200 x 2000
53	1.12.00000.12A-P-000001000	1	1200 x 2000
54	1.12.00000.12A-P-000001000	1	1200 x 2000
55	1.12.00000.12A-P-000001000	1	1200 x 2000
56	1.12.00000.12A-P-000001000	1	1200 x 2000
57	1.12.00000.12A-P-000001000	1	1200 x 2000
58	1.12.00000.12A-P-000001000	1	1200 x 2000
59	1.12.00000.12A-P-000001000	1	1200 x 2000
60	1.12.00000.12A-P-000001000	1	1200 x 2000
61	1.12.00000.12A-P-000001000	1	1200 x 2000
62	1.12.00000.12A-P-000001000	1	1200 x 2000
63	1.12.00000.12A-P-000001000	1	1200 x 2000
64	1.12.00000.12A-P-000001000	1	1200 x 2000
65	1.12.00000.12A-P-000001000	1	1200 x 2000
66	1.12.00000.12A-P-000001000	1	1200 x 2000
67	1.12.00000.12A-P-000001000	1	1200 x 2000
68	1.12.00000.12A-P-000001000	1	1200 x 2000
69	1.12.00000.12A-P-000001000	1	1200 x 2000
70	1.12.00000.12A-P-000001000	1	1200 x 2000
71	1.12.00000.12A-P-000001000	1	1200 x 2000
72	1.12.00000.12A-P-000001000	1	1200 x 2000
73	1.12.00000.12A-P-000001000	1	1200 x 2000
74	1.12.00000.12A-P-000001000	1	1200 x 2000
75	1.12.00000.12A-P-000001000	1	1200 x 2000
76	1.12.00000.12A-P-000001000	1	1200 x 2000
77	1.12.00000.12A-P-000001000	1	1200 x 2000
78	1.12.00000.12A-P-000001000	1	1200 x 2000
79	1.12.00000.12A-P-000001000	1	1200 x 2000
80	1.12.00000.12A-P-000001000	1	1200 x 2000
81	1.12.00000.12A-P-000001000	1	1200 x 2000
82	1.12.00000.12A-P-000001000	1	1200 x 2000
83	1.12.00000.12A-P-000001000	1	1200 x 2000
84	1.12.00000.12A-P-000001000	1	1200 x 2000
85	1.12.00000.12A-P-000001000	1	1200 x 2000
86	1.12.00000.12A-P-000001000	1	1200 x 2000
87	1.12.00000.12A-P-000001000	1	1200 x 2000
88	1.12.00000.12A-P-000001000	1	1200 x 2000
89	1.12.00000.12A-P-000001000	1	1200 x 2000
90	1.12.00000.12A-P-000001000	1	1200 x 2000
91	1.12.00000.12A-P-000001000	1	1200 x 2000
92	1.12.00000.12A-P-000001000	1	1200 x 2000
93	1.12.00000.12A-P-000001000	1	1200 x 2000
94	1.12.00000.12A-P-000001000	1	1200 x 2000
95	1.12.00000.12A-P-000001000	1	1200 x 2000
96	1.12.00000.12A-P-000001000	1	1200 x 2000
97	1.12.00000.12A-P-000001000	1	1200 x 2000
98	1.12.00000.12A-P-000001000	1	1200 x 2000
99	1.12.00000.12A-P-000001000	1	1200 x 2000
100	1.12.00000.12A-P-000001000	1	1200 x 2000

Parts list with calculations

MayCAD

Download link:

www.maytec.de/index.php?id=21

MayTube

Design Software

- Free to use
- Online 3D CAD-Tool
- No software installation required
- 80% faster
- Export function for 3D models and parts list

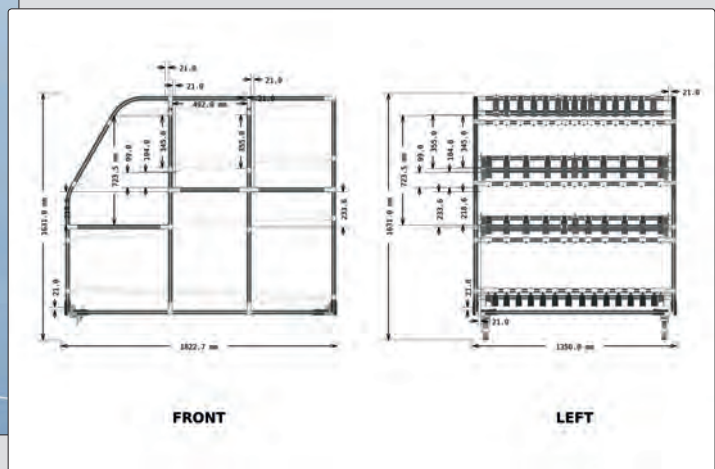
Sample

Kanban material conveyancing

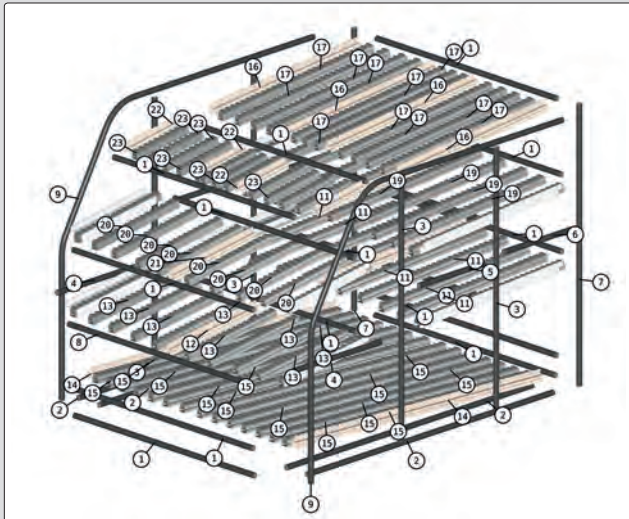
Complete in 60 min. ... Ready



3D view



Dimensional drawing



Exploded view with part numbers

Part	Reference	Description	Units	Qty	Each	Price
1	21.11.110.20.01	Steel pipe Ø21.3, 2.0, black, F20	m	35	44	154.05
2	21.11.110.20.01	Steel pipe Ø21.3, 2.0, black, F20	m	4	15.51	62.04
3	21.11.110.20.01	Steel pipe Ø21.3, 2.0, black, F20	m	4	11.17	44.67
4	21.11.110.20.01	Steel pipe Ø21.3, 2.0, black, F20	m	2	4.15	12.31
5	21.11.110.20.01	Steel pipe Ø21.3, 2.0, black, F20	m	2	5.88	18.31
6	21.11.110.20.01	Steel pipe Ø21.3, 2.0, black, F20	m	2	5.34	18.87
7	21.11.110.20.01	Steel pipe Ø21.3, 2.0, black, F20	m	2	11.47	23.14
8	21.11.110.07.01	Steel pipe Ø21.3, 2.0, black, F20	m	1	3.65	3.65
9	21.11.110.20.01	Steel pipe Ø21.3, 2.0, black, F20, custom stop, special order	m	2	0.00	0.00
10	21.10.2.02.03	Center guiding profile	m	1	14.18	14.18
11	21.10.2.04.02	Roller track Ø10 low noise, black rollers, ISO	m	11	10.72	117.90
12	21.10.2.02.04	Center guiding profile	m	1	9.51	9.51
13	21.10.2.04.02	Roller track Ø10 low noise, black rollers, ISO	m	10	11.11	111.40
14	21.10.2.02.03	Center guiding profile	m	2	22.06	44.25
15	21.10.2.04.02	Roller track Ø10 low noise, black rollers, ISO	m	10	26.13	261.81
16	21.10.2.02.03	Center guiding profile	m	4	14.18	56.72
17	21.10.2.04.02	Roller track Ø10 low noise, black rollers, ISO	m	11	10.78	118.58
18	21.10.2.02.03	Center guiding profile	m	4	14.17	56.67
19	21.10.2.04.02	Roller track Ø10 low noise, black rollers, ISO	m	10	10.72	107.20
20	21.10.2.04.02	Roller track Ø10 low noise, black rollers, ISO	m	10	10.84	108.39
21	21.10.2.02.03	Center guiding profile	m	1	0.05	0.05
22	21.10.2.04.02	Roller track Ø10 low noise, black rollers, ISO	m	4	0.00	0.00
23	21.10.2.04.02	Roller track Ø10 low noise, black rollers, ISO	m	11	7.19	79.14
24	21.10.2.110.03	Side guiding profile with offset, ivory	m	2	9.00	18.00
25	21.10.2.110.03	Side guiding profile with offset, ivory	m	2	12.00	24.00
26	21.10.2.110.03	Side guiding profile with offset, ivory	m	2	15.00	30.00
27	21.10.2.110.03	Side guiding profile with offset, ivory	m	2	9.50	19.00
28	21.10.2.110.03	Side guiding profile with offset, ivory	m	2	9.50	19.00
29	21.10.2.110.03	Side guiding profile with offset, ivory	m	2	9.50	19.00
30	21.10.2.110.03	Side guiding profile with offset, ivory	m	2	9.50	19.00
31	21.10.2.110.03	Side guiding profile with offset, ivory	m	2	9.50	19.00
32	21.10.2.110.03	Side guiding profile with offset, ivory	m	2	9.50	19.00
33	21.10.2.110.03	Side guiding profile with offset, ivory	m	2	9.50	19.00
34	21.10.2.110.03	Side guiding profile with offset, ivory	m	2	9.50	19.00
35	21.10.2.110.03	Side guiding profile with offset, ivory	m	2	9.50	19.00
36	21.10.2.110.03	Side guiding profile with offset, ivory	m	2	9.50	19.00
37	21.10.2.110.03	Side guiding profile with offset, ivory	m	2	9.50	19.00
38	21.10.2.110.03	Side guiding profile with offset, ivory	m	2	9.50	19.00
39	21.10.2.110.03	Side guiding profile with offset, ivory	m	2	9.50	19.00
40	21.10.2.110.03	Side guiding profile with offset, ivory	m	2	9.50	19.00

Parts list with calculations

The key ...

to success

extremely strong

efficient

functional

Australia

MayTec Australia P/L
Unit 8, 175 James Ruse Drive
Rosehill, NSW 2142

country code: +61
phone (0)2/98989929
fax (0)2/96384086
e-mail: info@maytec.com.au
<http://www.maytec.com.au>

Germany

MayTec Aluminium
Systemtechnik GmbH
Kopernikusstraße 20
D-85221 Dachau

country code: +49
phone (0)8131/3336-0
fax (0)8131/3336-119
e-mail: mail@maytec.de
<http://www.maytec.de>

USA

MayTec Inc.
901 Wesemann Drive
West Dundee, IL 60118

country code: +1
phone 847-429-0321
fax 847-429-0460
e-mail: mail@maytecinc.com
<http://www.maytecinc.com>

MayTec distributor

Imprint

Subject to technical modification.
All rights reserved.
Copying - also in parts - only allowed by
written consent.
© MayTec Aluminium Systemtechnik GmbH,
Germany, D - 82140 Olching, 2019